

TRAFFIC LOGIX® SAFEPAce® 625 INSTALLATION MANUAL

Radar Sign Installation

Full



Compact



SafePace® 625 Installation Manual

Copyright © 2016 Traffic Logix Corporation. All rights reserved.

This manual may not be copied in whole or in part, nor transferred to any other media or language, without the express written consent of Traffic Logix Corporation.

This document is supplied as a guide for the SafePace 625 product. Reasonable care has been taken in preparing the information it contains. However, it is possible that this document contains omissions, technical inaccuracies, or typographical errors. Product specifications are subject to change without notice and should not be considered commitments by Traffic Logix Corporation. Traffic Logix Corporation does not accept responsibility of any kind for customers' losses due to the use of this document.

Trademarks

Traffic Logix® and SafePace® are registered trademarks of Logix ITS Inc. All other product and company names are trademarks or registered trademarks of their respective owners.

This document may contain confidential and proprietary information of Traffic Logix Corporation and/or other third parties which is protected by copyright, trade secret and trademark law and may not be provided or otherwise made available without prior written authorization.

Document created: 11:50 AM on Tuesday, November 22, 2016

Document version: 1.1

Traffic Logix Corporation
3 Harriet Lane
Spring Valley, NY
USA 10977

Tel: 1 (866) 915-6449
Fax: 1 (866) 995-6449
Web: www.trafficlogix.com
Email: info@trafficlogix.com

TABLE OF CONTENTS

Chapter 1	4
Introduction	4
Overview	5
About this Manual	6
Documentation Conventions	6
Contacting Technical Support	7
Chapter 2	8
Installing the SafePace 625	8
Selecting a Site for the Sign	9
Choosing a Position for the Sign	10
Mounting the Sign	11
Using the Standard Pole Banding Mounting	11
Using the Universal Mounting Bracket System	12
Chapter 3	17
Power Options for your Sign	17
AC Power	18
Solar Power	19
Mounting the Solar Panel	19
Wiring the Solar Panel to the Sign	20
Battery Power	22
Chapter 4	24
Sign Operation and Maintenance	24
Opening and Closing the Sign Latches	25
Operating Your Sign	27
Turning the Sign On and Off	27
Replacing Key Components	28
Warranty	29

Chapter 1

INTRODUCTION

Overview

The Traffic Logix SafePace 625 radar feedback sign offers a relatively lightweight, portable speed display and messaging solution that doesn't compromise on digit size or visibility. It displays vehicle speed in full 15" LED digits and can be seen from up to 600 feet away. Using SafePace Pro, our user-friendly management software, you can configure the sign to display a "SLOW DOWN" text message in response to the driver speeds. Whether you want to simply alert drivers of their speeds or advise them to slow down when their speeds are excessive, you can configure the sign to suit.

The sign has a weight of around 24 lbs and, using optional battery power, it can function autonomously for up to two weeks. The SafePace 625 "SLOW DOWN" message sign can also be combined with the SafePace Beacons to create a complete School Zone System, and can be mounted to the SafePace Cruiser or Cruiser LT for portable speed control.

This sign is available with either a full-size or compact sign face.

About this Manual

This manual describes the installation of the SafePace 625 sign, along with an optional solar panel, to the side of a pole. This manual also describes the wiring specifications for AC powered, and combined solar/battery powered configurations.

Documentation Conventions

This document uses the following formatting conventions:

Format	Description
Bold Gray	Used in procedures to indicate menu commands, interface controls and dialog box options.
<i>Italics</i>	Used to place emphasis on certain words.
Monospace text	Is used for code samples and any information that the user enters.
<i>Italicized monospace text</i>	Used to indicate text that you should replace with your own. For example: In the Save As text box, enter c:\ <i>filename.ext</i> where <i>filename.ext</i> is the name of the file you want to save.
>	Used to indicate a sequence of commands (and sub commands) to be carried out in the displayed order. For example File > Exit means to open the File menu then choose the Exit command. This applies to menus from the main menu bar, context menus that appear when you right-click on the interface, and tiles in a tiled interface.



NOTE: Notes are used as reminders or to provide information of interest that supplements or emphasizes important points of the main text.



TIP: Tips are used to suggest alternative methods, workarounds and/or shortcuts that are not essential but that you may find useful in a given situation.



CAUTION: Cautions are used to advise users of specific actions that could result in a loss of data.



WARNING: Warnings are used to advise users of specific actions that could result in personal physical injury or damage to equipment.

Contacting Technical Support

If you have questions or comments regarding this document or SafePace 625, please feel free to contact our technical support center by phone: 1 (866) 915-6449, or by email: support@trafficlogix.com

Chapter 2

INSTALLING THE SAFEPACE 625

There are several methods and hardware options available for the installation of the SafePace 625 sign. It can be mounted with either a pole bracket or a universal sign bracket.

Selecting a Site for the Sign

The site you select for the sign may vary with the application in which the SafePace 625 radar sign is being used. However, you should generally adhere to the following guidelines:

- » Choose a location where the line of sight from the radar sign to the vehicle will be uninterrupted. Give consideration to how the location may develop with time. The following types of questions should be considered:
 - Will any trees grow directly in the line of vision?
 - Is it likely that road traffic signs will be erected in a position that could obstruct the field of view?
 - For solar-powered signs, are the solar panels likely to be blocked by any trees or other structures?
- » Install the radar sign directly adjacent to the lane of traffic being targeted since an interfering lane of traffic may cause inaccurate speed readings.
- » Mount the radar sign to a stable and firm structure. Avoid structures that are likely to be affected by wind or rain. We suggest that you use a 4-inch to 5-inch diameter circular metallic pole, ideally, or a 4-inch × 4-inch wooden pole. For 'Telespar' poles, we strongly recommend that you use the 2-inch variety.

Choosing a Position for the Sign

Similar to other road signs, the SafePace 625 radar sign should be installed near the closest lane of traffic, although off the actual road. The recommended height of the lower edge of the radar speed sign is approximately 7 feet above the surface of the road. The display should be turned towards oncoming traffic so that it is clearly visible to approaching drivers.

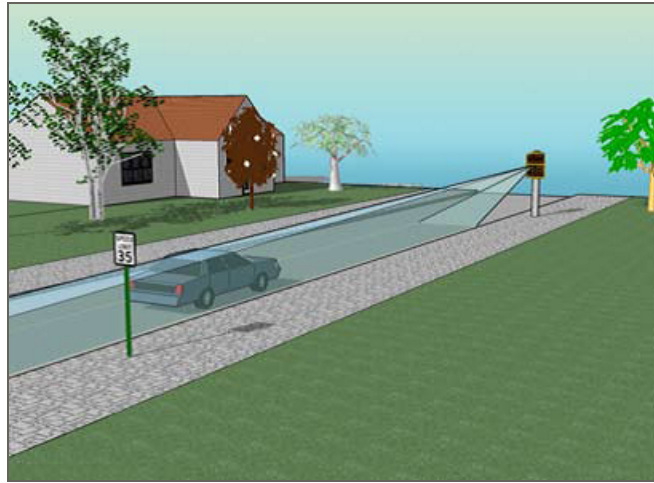


Figure 1: Example of Sign Location

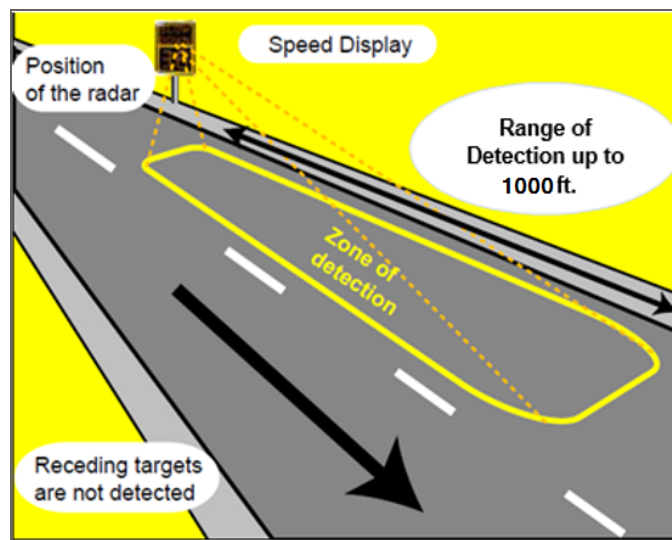


Figure 2: Zone of Detection

Mounting the Sign

The SafePace 625 sign and optional solar panel should optimally be mounted on a 12-foot to 14-foot pole. You can install the sign using either of the following methods and hardware options:

- » Standard Pole Banding Mounting
- » Universal Mounting Bracket System

Using the Standard Pole Banding Mounting

The SafePace 625 sign comes with a Standard Pole Banding Mounting system. As this is a standard type of mounting it requires no special knowledge to easily install the sign.

To install the sign using the standard pole banding mounting system:

1. Attach the supplied banding brackets to the top and bottom of the rear of the sign with the supplied tamper-proof, M6 security screws as shown below.



Figure 3: Attaching the banding bracket to the sign



Figure 4: Standard banding brackets mounted directly to a sign with M6 tamper-proof screws

2. Insert the stainless steel banding strap into the bracket and fasten the sign to the pole.
3. Tighten the strap with a nut driver until secure. See *Figure 5: on the next page*.



Figure 5: Sign Secured to a Pole with Banding Strap

Using the Universal Mounting Bracket System

The SafePace 625 sign comes with a Universal Mounting Bracket System that allows you to quickly and easily mount the sign to virtually any type of pole or surface in a secure manner.

There are two parts to the bracket: one for the sign (the sign bracket) and the other (the pole bracket) for the pole. The sign bracket needs to be attached to the back of the sign. Attach the pole bracket to the pole or structure where you want to mount the sign. This allows you to easily slide the sign onto the pole bracket where it can be locked into place with the included key. You can just as easily remove it from the bracket once it is unlocked.

The quick mount and dismount feature of this bracket allows you to easily move the sign from one location to another with relative ease and convenience.

Installing the Sign Bracket

To install the Sign Bracket:

- » Attach the Sign Bracket to the backside of the sign using the included hardware.



Figure 6: Attaching the sign bracket.



Figure 7: Backside of sign bracket attached.

Installing the Pole Bracket

The Pole Bracket can be secured to any type of standard pole or Telespar type pole by a choice of banding straps, lag screws, or bolts and nuts.



TIP: We recommend that you install the bracket on a 2-inch Telespar pole.

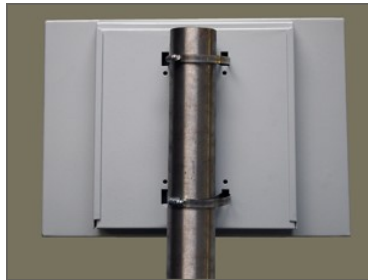


Figure 8: Pole bracket mounted to a circular pole



Figure 9: Pole bracket mounted to a 2-inch Telespar pole

To install the Pole Bracket on a Telespar Pole:

- » Use the supplied 2.5-inch stainless steel security bolts and nuts to secure the Pole Bracket to the 2-inch Telespar pole.



NOTE: It is very important that the head of the bolt be placed on the Telespar pole (see *Figure 10: below*) and that the nuts be placed on the inside part of the bracket (see *Figure 11: below*).

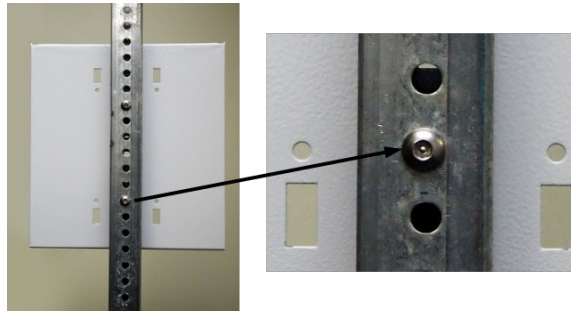


Figure 10: Pole bracket with bolts on the Telespar pole

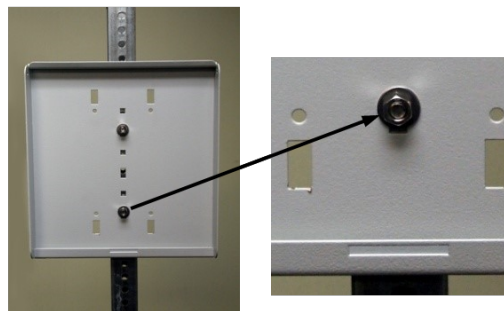
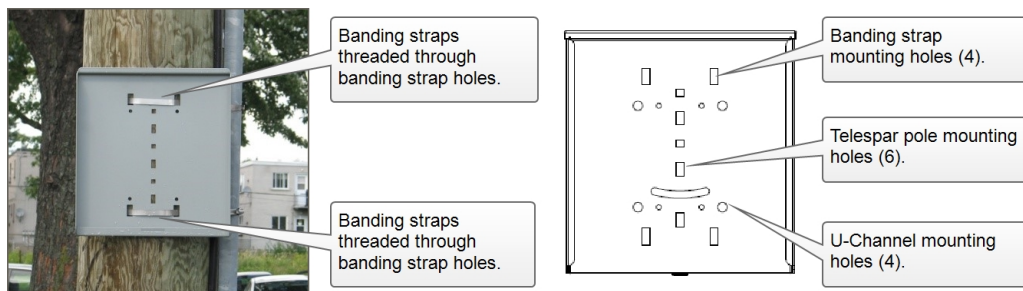


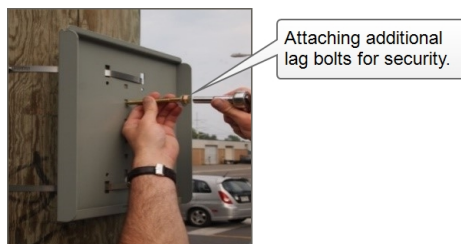
Figure 11: Pole bracket with nuts placed on the inside of the sign bracket

To install the Pole Bracket using the supplied banding straps:

1. Thread the banding straps through the banding strap holes as shown.



2. Use additional screws and/or bolts to further prevent theft and vandalism.



Mounting and Dismounting the Sign

Once you have installed the mounting brackets, you can easily mount the SafePace 625 sign by sliding it down onto the Pole Bracket. Once mounted, you should lock the sign into place.

To mount the sign:

1. Position the sign above the bracket.



2. Slide the sign down the bracket.



3. Use the supplied key to lock the sign in place.



To dismount the sign:

1. Unlock the sign.
2. Slide the sign up and off of the Pole Bracket.

Chapter 3

POWER OPTIONS FOR YOUR SIGN

The SafePace 625 sign is offered in several powering models. Depending on what model you have purchased, powering the sign will vary. The available power options are as follows:

- » AC powered
- » Solar powered (uses one or more 4-cell lithium batteries for backup)
- » Battery powered (includes one or more rechargeable 4-cell lithium batteries)



NOTE: The warranty on the batteries is limited to 1 year — please contact Technical Support for more details (see *Contacting Technical Support* on page 7).

AC Power

The SafePace 625 sign is equipped to accept 100-240 volts of AC power. For these signs (standard model), the regulated power supply comes already pre-wired, and your sign is ready to operate once it is mounted and wired to the incoming power supply. The Line (BLACK) and Neutral (WHITE) wires of the incoming power supply should be connected to the marked terminals. The Ground wire should be connected to the GREEN/YELLOW terminal (see Figure 13: below).



Figure 12: AC power supply terminal block

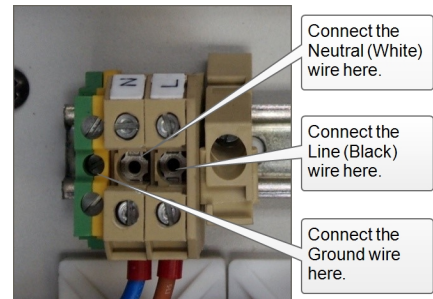


Figure 13: Close-up view of AC power connectors



WARNING: ELECTRICAL SHOCK HAZARD. To avoid serious injury or even death, all electrical wiring should be performed by a qualified and professional electrician in accordance with local electrical codes. Mishandling of electrical wiring may also result in damage to the unit and may void product warranty.



WARNING: Should you need to drill holes in the sign for the AC power wiring, drill from the inside/out as opposed to outside/in. This is to reduce the possibility of metal filings damaging the internal components of the sign.



WARNING: It is vitally important, whenever you close the sign, that you close and lock *all* of the latches properly to avoid water infiltration as this could damage the sign and void your warranty.

Solar Power

The Solar powered model of the SafePace 625 sign includes a solar panel and mounting bracket, one or more 4-cell lithium batteries, and a solar charger. The solar panel powers the sign when exposed to sunlight while at the same time charging the batteries to provide a power backup for night-time and cloudy day use. The solar panel is quick to install and should suffice in most installations.



Figure 14: Solar panel

Mounting the Solar Panel

You need to mount the solar panel at the highest point on the pole, optimally 10-12 feet high. Use the supplied solar panel bracket (see *Figure 15: below*) and follow the instructions provided by the manufacturer (included in the bracket's packaging).



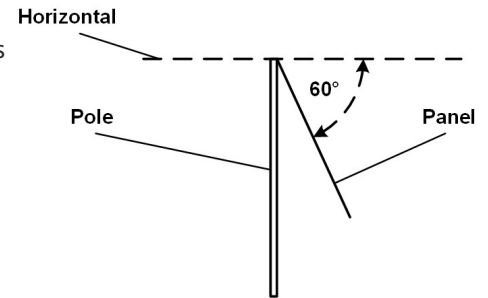
Figure 15: Solar panel mounting bracket

The two-part bracket allows for full adjustment in order to best position the panel towards the sun. It is optimal to position your solar panel towards due Solar South (not magnetic South), if you are in the northern hemisphere and towards due Solar North (not magnetic North) if you are in the southern hemisphere.

Regardless of whether you are in the northern or southern hemisphere, Solar North/South is the position of the sun in the sky at exactly the midpoint between sunrise and sunset.

The solar panel should be angled 15 degrees above the latitude of the installation site. For example, if the latitude of the installation site is 45 degrees then the solar panel should be installed at an angle of 60 degrees, as shown.

You can easily obtain the latitude of the installation site from mapping software or for free by doing an internet search for "latitude *your_city*" where *your_city* is the name of the city or region where the panel is being installed.



Wiring the Solar Panel to the Sign

As shown in the following images, the solar panel and the sign come pre-wired with connectors that allow for a simple installation. The red male and black female connectors from the sign need to be connected to corresponding connectors on the solar panel.



Figure 16: Solar panel wires and connectors on the back of the solar panel



Figure 17: Wires and connectors from the sign enclosure.



WARNING: To prevent damage to the solar charger, connect the solar panel to the sign *before* connecting the battery connectors to the solar charger in the sign.

To wire the solar panel to the sign:

1. Insert the connectors from the sign into the corresponding connectors from the solar panel as shown below.



2. Slide the connectors together until you hear a click and you can no longer slide them apart easily. Once connected the cables should look like the following:



3. Open the sign then connect the battery connectors for the solar charger as shown in the following image.



WARNING: Before ever doing any maintenance on a sign, it is critical that the power is first turned off. This will prevent accidental electrical shock that can be fatal and that can also damage electrical components.



WARNING: It is vitally important, whenever you close the sign, that you close and lock *all* of the latches properly to avoid water infiltration as this could damage the sign and void your warranty.

Battery Power

Battery powered signs come with three 4-cell Lithium batteries. In most instances, the batteries will be shipped already installed in the sign. At times, though, due to some shipping restrictions on Lithium batteries, they may be shipped separately. Once the batteries are received, remove them from the shipping packaging.



WARNING: Lithium batteries come with a protective black wrap on the outside of the unit that *should never* be removed; doing so damages the batteries and creates a potential hazard. The Lithium batteries supplied with the SafePace 625 sign are stable and safe when handled and used properly. Do not bend the batteries or attempt to puncture them with sharp objects as this could cause a fire and/or explosion.

Charge the batteries fully before the initial use. The supplied battery charger is equipped with a charge indicator. When the light on the charger is RED (with the battery plugged into both the battery and an AC power outlet) the battery is charging. Once the light turns GREEN, the battery is now fully charged and is ready for use.



Figure 18: Batteries inserted and connected



NOTE: This image is for illustrative purposes and the number of batteries in your sign may be different from that shown.

Installing the Battery

The battery should be placed with care into the battery holder inside the sign.



WARNING: Before closing the door of the sign, *always* make sure that the battery holder is closed and locked into place. Failure to do so may result in damage to the battery bracket and enclosure.

To install the battery in the battery bracket:

1. Pull on the plunger pins on either end of the upper bracket and flip open the bracket door.



2. Gently insert the battery into the lower bracket and lay the battery flat against the enclosure.
3. Gently close the battery bracket door and make sure the plunger pin locks into place.
4. Once the battery is secured in the battery bracket, connect the battery and sign power connectors. Once connected, the sign will power on.



WARNING: It is vitally important, whenever you close the sign, that you close and lock *all* of the latches properly to avoid water infiltration as this could damage the sign and void your warranty.

Chapter 4

SIGN OPERATION AND MAINTENANCE

Opening and Closing the Sign Latches

Every Traffic Logix sign comes with two or three over-center draw type latches. These latches help to protect the internal components of the sign from vandalism as well as water infiltration. As shown in the following illustration the important components of these latches are the lever, the blade and the catch.

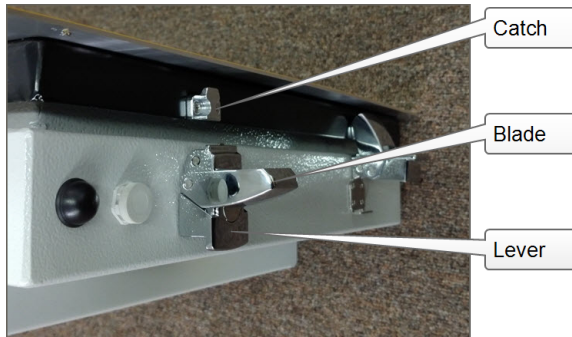


Figure 19: Components of the latches

The following procedures provide details on how to use these components to properly open and close, the latches on the signs.



WARNING: It is vitally important, whenever you close the sign, that you close and lock *all* of the latches properly to avoid water infiltration as this could damage the sign and void your warranty.

To open the latch:

1. Unlock the latch, with the supplied key.
2. Lift the lever then unhook the blade from the catch.

To close the latch:

1. Hook the blade over the catch as shown in the following image.



-
2. Lower the lever until flat against the surface of the enclosure as shown in the following image.



-
-
3. Use the supplied key to lock the latch.

Operating Your Sign

Once your sign is mounted and powered, you can connect to, and manage, it via Bluetooth with our easy to use SafePace® Pro application. You can also manage your sign remotely using SafePace® Cloud, if you purchased that option.

For more information on operating your sign with SafePace® Pro, refer to the *SafePace® Pro User Manual*. For more information on operating your sign with SafePace® Cloud, refer to the *Web Director 2.0 User Guide*.



TIP: You can get the latest version of all manuals at:
<http://www.trafficlogix.com/customerarea/customerdownloads>.

Turning the Sign On and Off

There is no ON/OFF switch supplied with the SafePace 625 sign. The sign immediately powers on once the power source is connected.

To turn the sign off:

- » Simply disconnect the battery on the battery models and the connector on the AC and Solar powered models.

Replacing Key Components

The SafePace 625 sign is comprised of the following key electronic components (and respective quantities):

- » Controller Card (1)
- » Radar Head (1)
- » BlueFin Bluetooth Controller (1)
- » VMFin VM Controller (1)
- » SIMFin GSM/GPRS Controller (1) - for SafePace® Cloud signs
- » LED Matrix Display Boards (2)
- » Combination LED Matrix Display/Speed Violator Strobe Board (1)
- » Ambient Light Sensors (2)
- » Battery/Solar charger (1) - for battery/solar-powered signs
- » AC Power converter (1) - for AC-powered signs



WARNING: Before ever doing any maintenance on a sign, it is critical that the power is first turned off. This will prevent accidental electrical shock that can be fatal and that can also damage electrical components..



WARNING: It is vitally important, whenever you close the sign, that you close and lock *all* of the latches properly to avoid water infiltration as this could damage the sign and void your warranty.

If you suspect that you require a replacement of any of the above-mentioned components, please call Technical Support, see *Contacting Technical Support* on page 7. If necessary, a Diagnostic Toolbox can be sent out to help troubleshoot any issues you may be having.

WARRANTY



Two Year Warranty

Two year warranty on parts and labor
excluding damage related to
vandalism, abuse, and/or theft

Subject to the following conditions, Traffic Logix Corporation (“Traffic Logix”) warrants that the SafePace 625 sign (the “Product”) is free from defects in materials and workmanship.

This limited warranty begins on the invoice date of your purchase of the Product and extends:

- » For TWO (2) calendar years on the sign, and
- » For ONE (1) calendar year on the batteries.

This limited warranty extends only to the original purchaser of the Product when purchased either directly through Traffic Logix or through an authorized Traffic Logix distributor and is not assignable or transferable to any subsequent purchaser or end-user. Traffic Logix’s obligation and liability under this warranty are expressly limited to repairing or replacing, at Traffic Logix’s option, defective products. In no circumstances shall Traffic Logix’s liability, whether in contract or tort, under any warranty, in negligence, or otherwise, exceed the amount of the purchase price of the product. Traffic Logix shall not be liable for special, indirect, or consequential damages of any kind. This warranty does not cover damages resulting from normal wear and tear, incorrect installation or operation, use other than for the product’s intended purposes, vandalism, and extraordinary environmental circumstances. Traffic Logix reserves the right to charge for these damages to the product at rates normally charged for repairing such products not covered under this warranty. Damages resulting from any physical changes or alterations made to the product other than Traffic Logix will render this warranty **VOID**. Using any parts or accessories not supplied or approved by Traffic Logix, such as battery chargers, will further render the warranty **VOID**.

Traffic Logix neither assumes, nor authorizes any person to assume for it, any other liability in connection with the sale of the Product, and there are no agreements or warranties collateral to or affecting this limited warranty.

THE LIMITED WARRANTY SET FORTH IN THIS AGREEMENT IS THE EXCLUSIVE AND SOLE WARRANTY APPLICABLE TO THIS PURCHASE. ALL OTHER WARRANTIES, EXPRESS OR IMPLIED, INCLUDING, BUT NOT LIMITED TO THE IMPLIED WARRANTY OF MERCHANTABILITY AND THE IMPLIED WARRANTY OF FITNESS FOR A PARTICULAR PURPOSE ARE EXPRESSLY DISCLAIMED.

Traffic Logix does not warrant that any of its products will meet or comply with the requirements of any applicable federal, state or local safety code, law, regulation or ordinance (“Applicable Safety Laws”). Buyer acknowledges that Traffic Logix’s products are to be used only in accordance with the attached Conditional Terms of Use and any Applicable Safety Laws. Buyer agrees that there shall be no coverage or benefits of any kind under this limited warranty if it is determined by Traffic Logix that the Product was not installed or used in accordance with the Conditional Terms of Use or Applicable Safety Laws, or if the Product has been altered in any way by anyone other

than Traffic Logix, or if the Product has been subject to any misuse or accident. In addition, Buyer assumes and agrees to indemnify Traffic Logix for all risk, liability or expense that results from any installation or use of the Product that is not in accordance with the Conditional Terms of Use or any Applicable Safety Laws.

Warranty Replacement Procedure

In order to submit a claim for the repair or replacement of the Product under this limited warranty, proceed as follows:

1. Contact Technical Support. **Do NOT** ship your defective product to Traffic Logix prior to contacting Technical Support.
2. A Technical Support Agent will evaluate the Product to determine if it is defective. You may be required to do some troubleshooting as part of this evaluation.
3. If the Product is defective, then you will need to submit your contact information, and proof of purchase (including the date of purchase), in order to obtain repair or replacement parts.
4. The Technical Support Agent will provide you with a Return Materials Authorization number and instructions on how to have the defective parts repaired or replaced.